



engineeringworldhealth 2022 IMPACT REPORT

CLICK THE [LINKS](#) FOR MORE INFORMATION!

SUMMER INSTITUTES

After a two-year hiatus due to COVID-19, in 2022 we completed four successful Summer Institutes with overwhelmingly positive feedback:



651

VOLUNTEERS



68

REPAIRS



\$1.3 M

VALUE

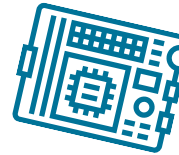
We provided 34 students with scholarships and supported the participation of 15 host country students in Rwanda & Guatemala.

- **Dominican Republic** Campus to Country Institute with the University of Portland
- **Guatemala** Summer Institute
- **Rwanda** Summer Institute
- **Nepal** Campus to Country Institute with Denmark Technical University

In its second year, [Kits for the Classroom](#) provided free hands-on STEM education to over 700 students in Title I K-12 schools across the United States.

Our reusable [Optical Heart Rate Monitor Kits](#) and accompanying lesson plans are designed to introduce students to **engineering, circuitry,** and **global health** careers.

ENGINEERING EDUCATION



130

KITS



737

STUDENTS



8

SCHOOLS

Our free, online [BMET Library](#) grew from 9,000 users around the world in 2021 to **over 15,000** in 2022. There are over 3,000 resources in the Library, and 50 new items are added each month.

UNIVERSITY CHAPTERS

EWH University Chapters provide students with a unique opportunity to connect with a **global network** of biomedical engineers and other students who share their passion.



Our 13th **annual design competition** received 14 entries from 10 Chapters across 4 countries.



30

CHAPTERS



400+

MEMBERS



11

COUNTRIES

Chapters did **STEM outreach programs** in their local communities, entered design competitions, hosted fundraising galas, and more.

VIRTUAL PROGRAMS



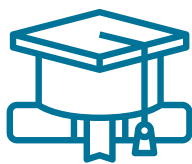
6

PROGRAMS



7

COUNTRIES



300+

GRADUATES

What started as a response to the COVID-19 pandemic has become a core part of our work; virtual programs enable EWH to reach **more young people** than ever before with high-quality engineering education and cultural exchange opportunities.

For more information about all of our programs, visit www.ewh.org